

Waller, Scott

From: Gilliam, Allen
Sent: Thursday, November 08, 2012 10:18 AM
To: randel.davis@badboymowers.com
Cc: batesville eugene townsley; wwinspector@cityofbatesville.com; Waller, Scott; Fuller, Kim
Subject: AR0020702_Bad Boy facilities 1 and 2 ARP001027 ARP001028 updated schematics reply_20121108
Attachments: 11-7-12rd.pdf

Randel,

Thank you for the updated schematics and tank volumes for your 2 facilities. These will replace the ones sent in with your two initial baseline monitoring reports.

The footnotes included on your schematics helps explain to any interested party that your "work tanks" 1, 3 and 5 are hauled off-site for disposal separately from the rinse tanks 2 and 4 which are discharged to the City.

Both schematics show two separate sampling points. It is stated in your two baseline monitoring reports sampling for compliance of the rinse waters will be taken from the sumps inside the plants. If that is not correct, please advise. It is important to know the correct sampling point for compliance with the Federal Metal Finishing limitations in 40 CFR 433.17.

Sincerely,

Allen Gilliam
ADEQ State Pretreatment Coordinator
501.682.0625

ec: Eugene Townsley/Batesville Water Utilities Superintendent
Mike McDaniels/Batesville Wastewater Inspector

From: Randel Davis [<mailto:randel.davis@badboymowers.com>]
Sent: Thursday, November 08, 2012 8:01 AM
To: Gilliam, Allen
Subject: FW:

Allen

Here is the schematics for the washers.

Bad Boy #1
Stage1 is 1500 gal
Stage2 is 750 gal
Stage3 is 900 gal
Stage4 is 750 gal
Stage5 is 750 gal

Bad Boy #2
Stage1 is 1500 gal

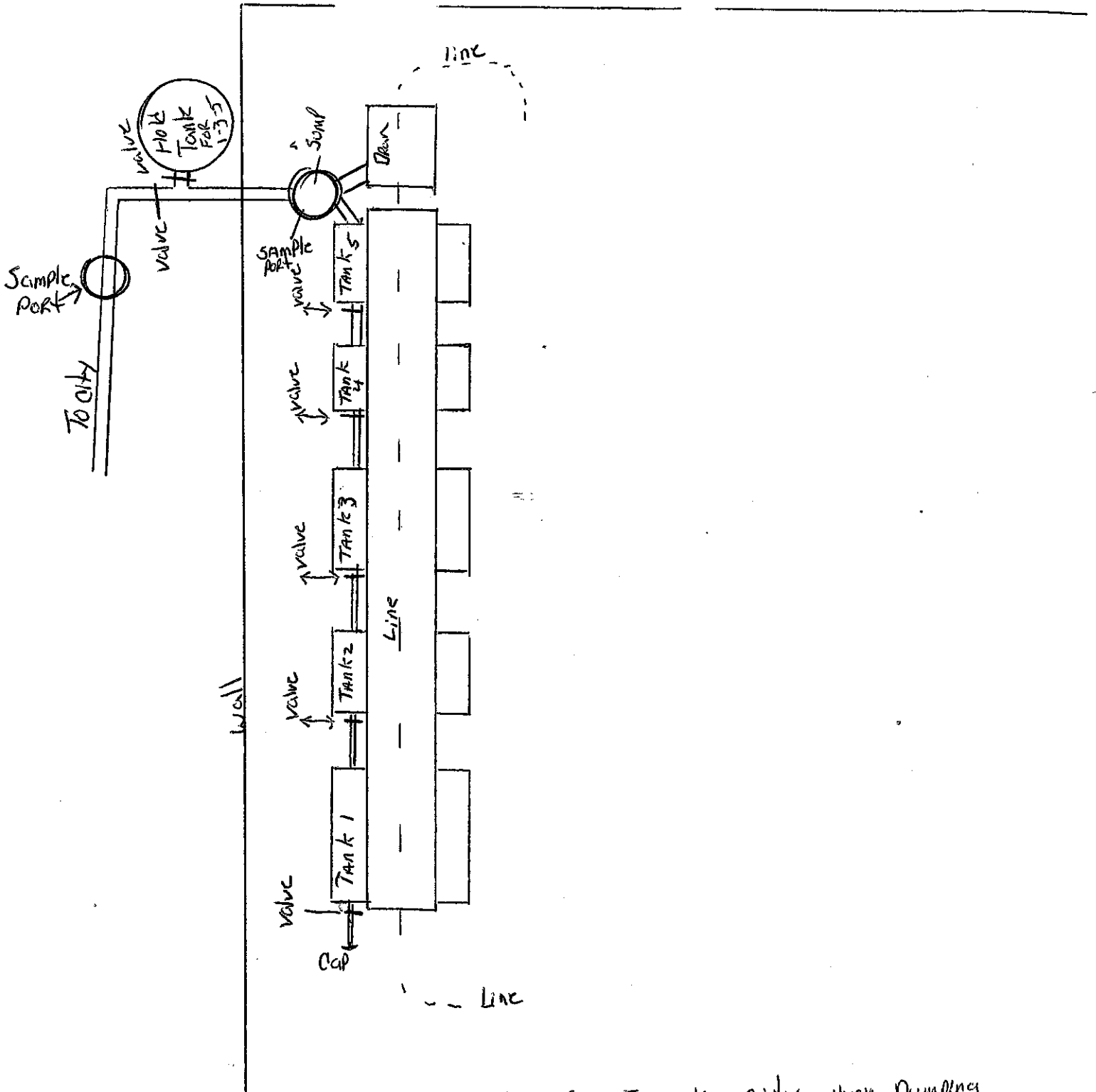
Stage2 is 940 gal
Stage3 is 1125 gal
Stage4 is 940 gal
Stage5 is 940 gal

Stages 1 3 & 5 is cut off from the city when dumping and captured in holding tank. No process water from stage 2 & 4 is on at that time on both Bad Boy 1 & Bad Boy 2.

Thanks

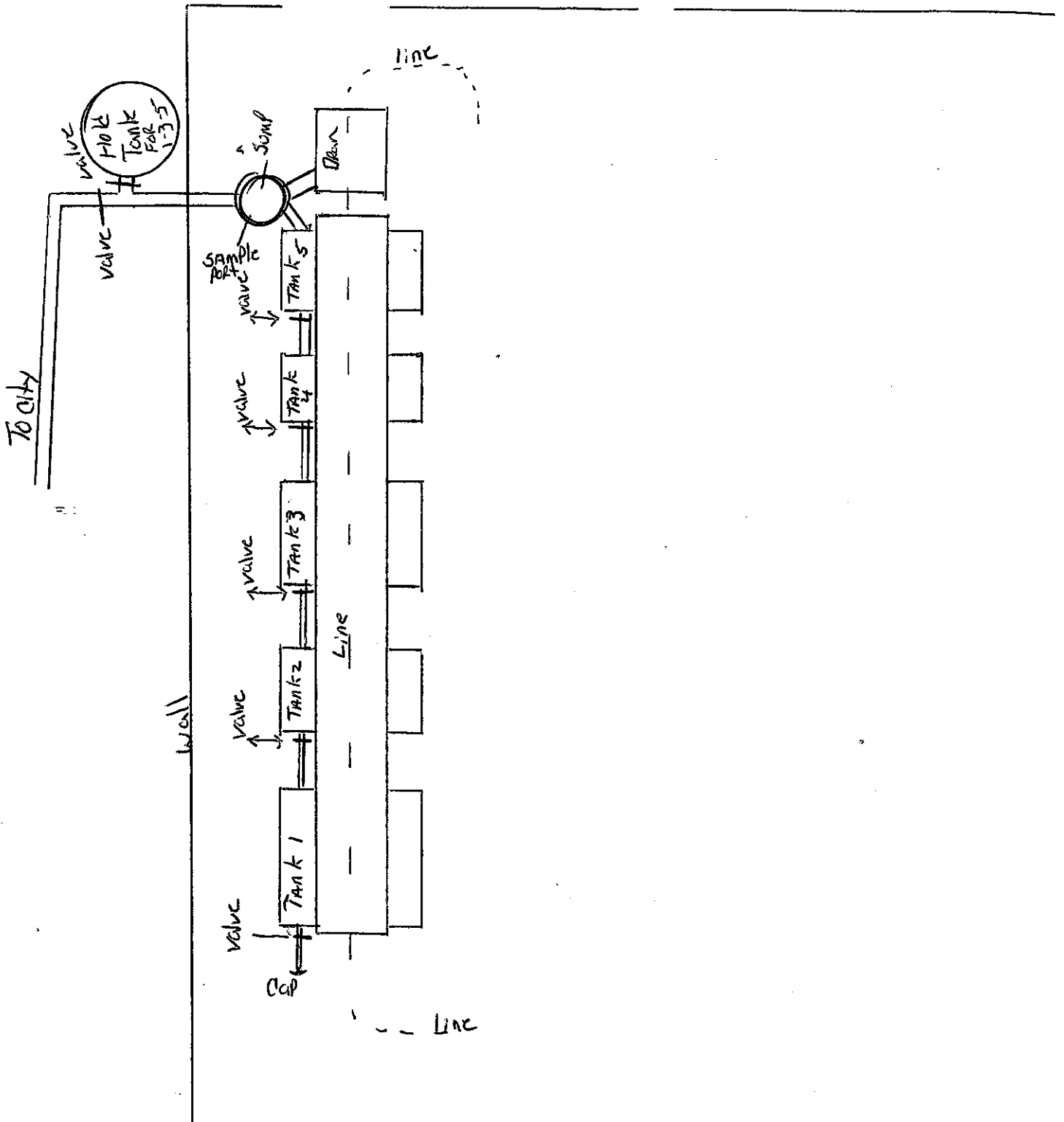
Randel

Bad Boy #2



* 1-3-5 is cut off from the city when dumping and captured in holding tank. NO PROCESS WATER is on at that time.

Bad Boy # 1



* 1-3-5 Is cut OFF From the city when dumping and captured in holding tank, NO PROCESS WATER is on at That Time